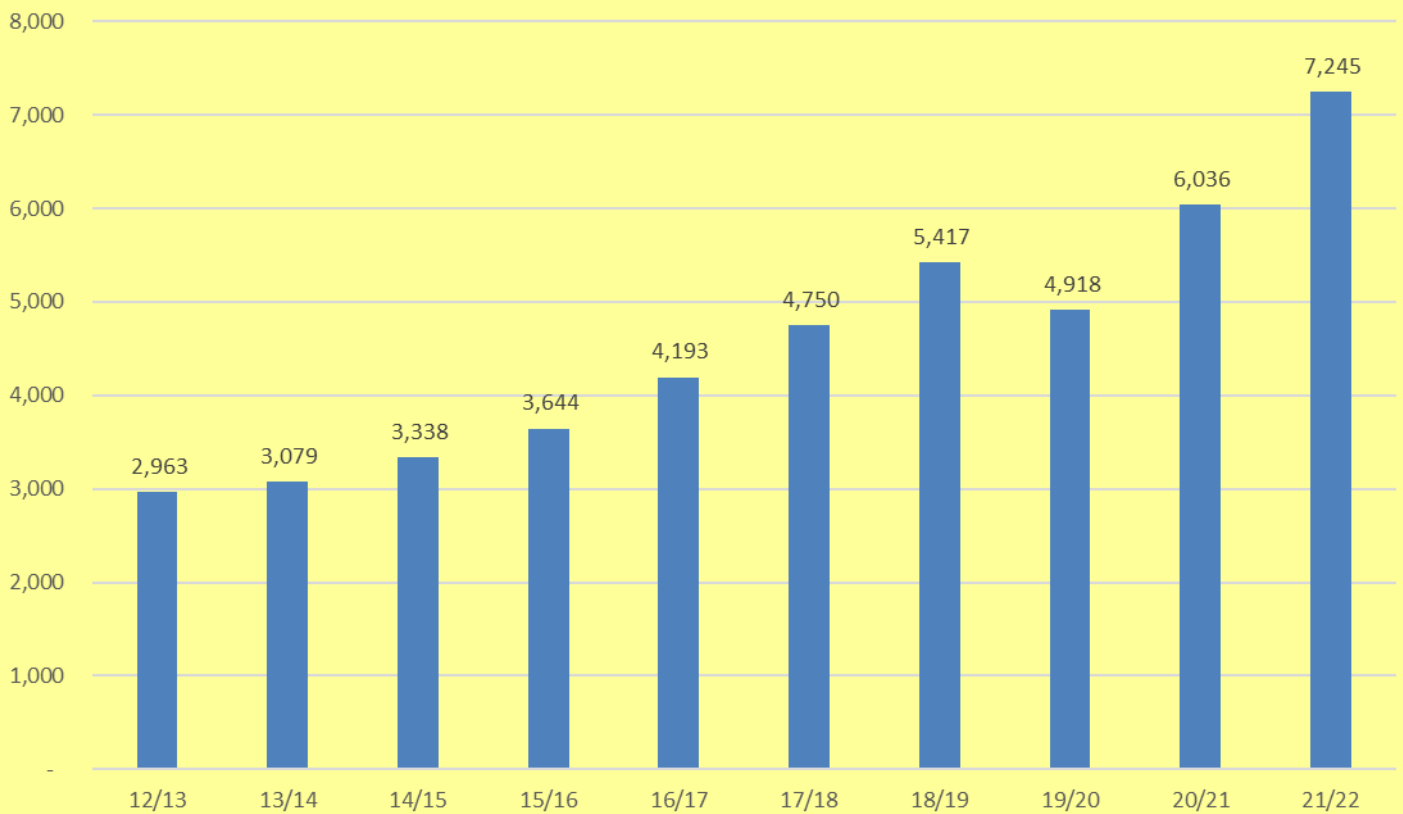
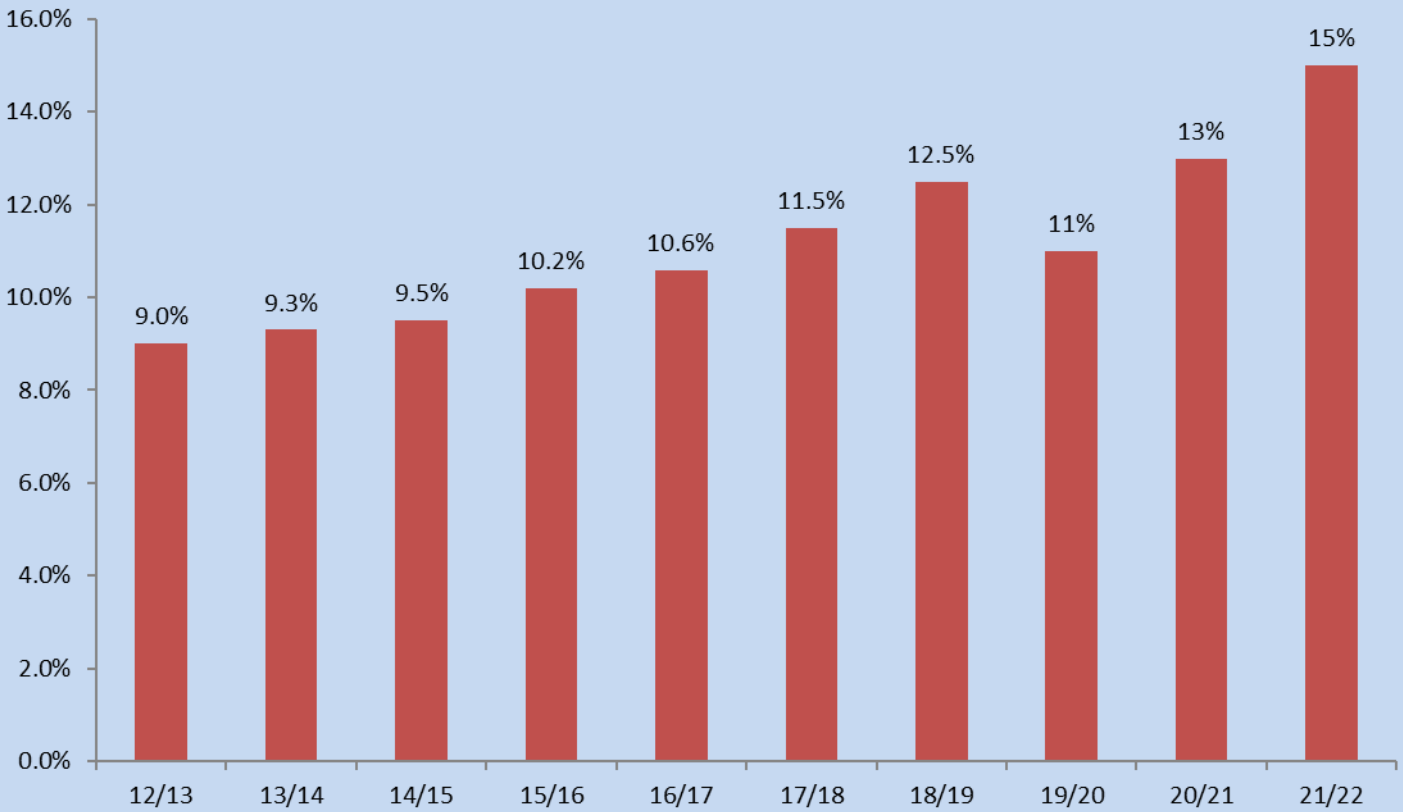




No disabled students attending UoE (last 10 years)

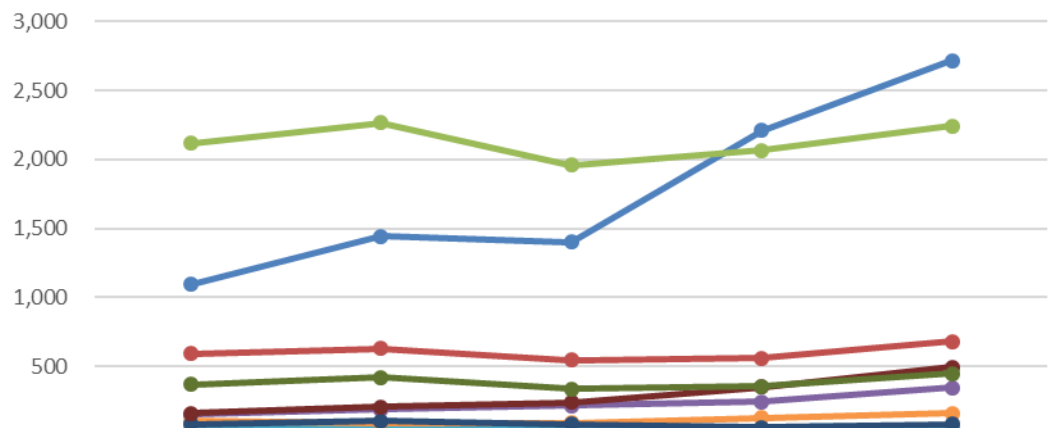


Disabled students as % of full student population (last 10 years)



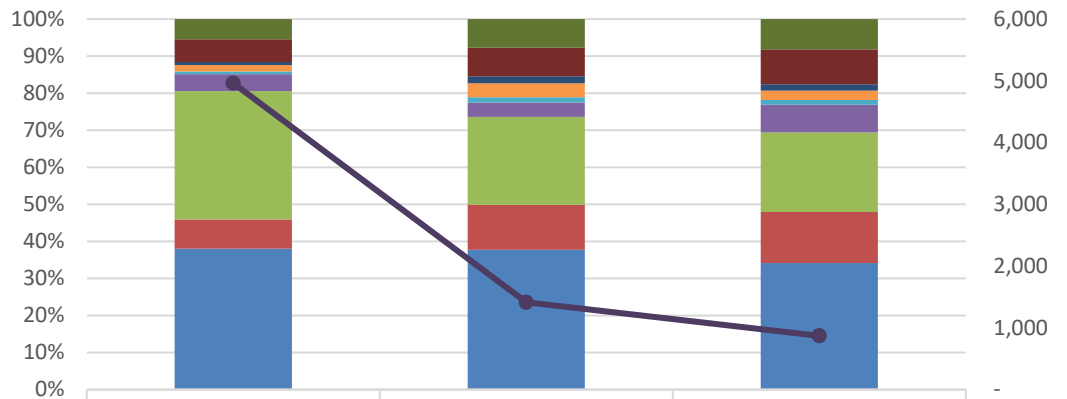


No of students declaring a disability by UCAS Code in last 5 years



	17/18	18/19	19/20	20/21	21/22
Mental Health	1,093	1,445	1,400	2,209	2,718
Unseen	595	632	545	560	681
Specific Learning Difference (SpLD)	2,119	2,264	1,960	2,067	2,242
Autistic Spectrum (AS)	151	187	215	245	348
Visual	75	62	50	61	66
Hearing Loss/Deaf	106	91	90	127	161
Mobility	81	105	80	61	84
Multiple	160	209	240	350	495
Other	370	422	340	356	450

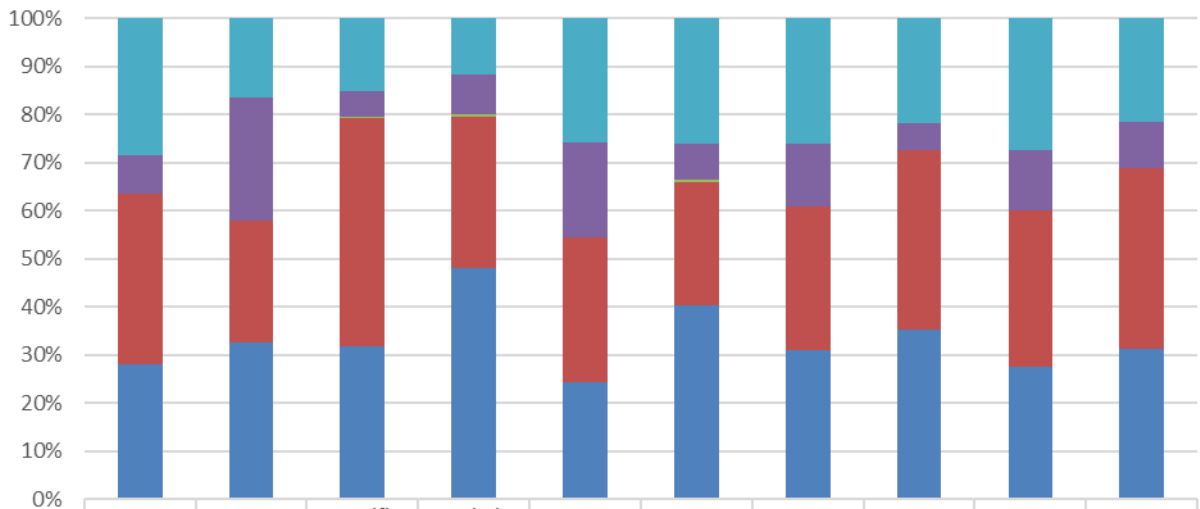
No students by disability and degree level



	UG	PGT	PGR
Other	270	109	71
Multiple	304	109	82
Mobility	42	27	15
Hearing Loss/Deaf	86	53	22
Visual	35	20	11
Autistic Spectrum (AS)	228	55	65
Specific Learning Difference (SpLD)	1,720	335	187
Unseen	389	172	120
Mental Health	1,888	533	297
All Disabilities	4,962	1,413	870

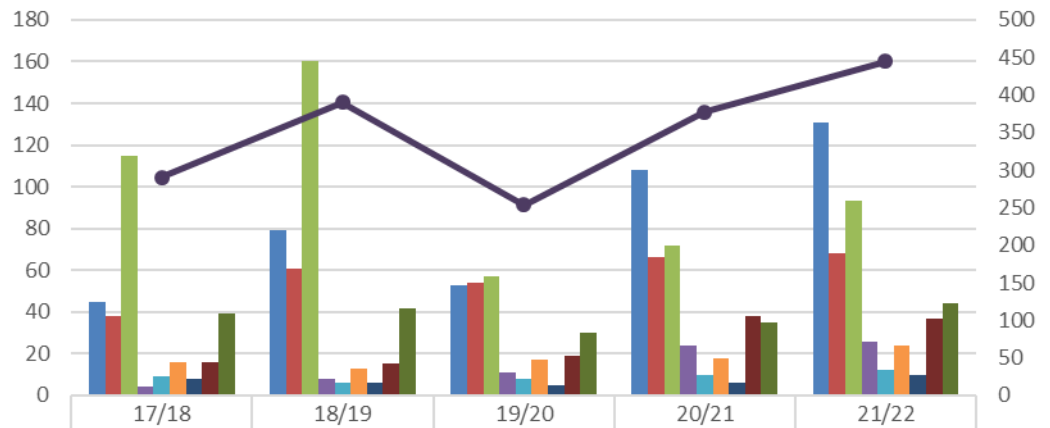


Disabled students by domain



	Mental Health Issues	Unseen Disability	Specific Learning Difference (SpLD)	Autistic Spectrum Disorder (ASD)	Visual Impairment	Hearing Loss/Deaf	Mobility Impairment	Multiple Disabilities	Other Disability	Total
Overseas	776	138	339	41	17	42	22	108	123	1,606
EU	218	212	119	29	13	12	11	28	57	699
Channel Is / Is of Man	2	-	6	1	-	1	-	-	-	10
Other UK	963	212	1,066	110	20	41	25	184	146	2,767
Scotland	759	271	712	167	16	65	26	175	124	2,315

Online Distance Learners (last 5 years)



	17/18	18/19	19/20	20/21	21/22
Mental Health Issues	45	79	53	108	131
Unseen Disability	38	61	54	66	68
Specific Learning Difference (SpLD)	115	160	57	72	93
Autistic Spectrum Disorder (ASD)	4	8	11	24	26
Visual Impairment	9	6	8	10	12
Hearing Loss/Deaf	16	13	17	18	24
Mobility Impairment	8	6	5	6	10
Multiple Disabilities	16	15	19	38	37
Other Disability	39	42	30	35	44
Total	290	390	254	377	445



Disability & Learning Support Service (DLSS) Student Statistics 2020/21

College of Arts, Humanities and Social Sciences	Mental Health	Unseen	SpLD	AS	Visual	Hearing	Mobility	Multiple	Other	Total	Sch Pop	% Sch Pop	% Dis Students
Business	54	20	91		3	2	4	12	17	203	2,370	9%	3%
Edinburgh College of Art	250	44	268	23	3	8	4	47	33	680	3,687	18%	9%
Divinity	47	10	45	8		1	2	10	8	131	503	26%	2%
Economics	29	11	64	7	1	4		5	9	130	1,270	10%	2%
Health in Social Science	96	40	81	5	2	11	8	23	16	282	1,490	19%	4%
History and Classics and Archaeology	218	43	156	36	8	13	8	48	31	561	2,333	24%	8%
Law	124	28	71	7	5	9	3	22	26	295	1,955	15%	4%
Literature, Languages and Cultures	297	42	126	29	1	10	7	44	36	592	3,004	20%	8%
Philosophy, Psychology and Language Sciences	254	37	131	23	2	6	6	39	31	529	2,586	20%	7%
Moray House School of Education	88	53	127	9	1	23	6	21	19	347	3,157	11%	5%
Social and Political Sciences	314	65	211	22	6	10	4	33	35	700	3,382	21%	10%
Centre for Open Learning	31	9	22	3	3	7	2	14	9	100	527	19%	1%
AHSS General Degree or Visiting Student	68	10	24	3	3	2	1	8	7	126	1,160	11%	2%
College Total	1,870	412	1,417	175	38	106	55	326	277	4,676	27,424	17%	65%
College of Medicine and Veterinary Medicine	Mental Health	Unseen	SpLD	AS	Visual	Hearing	Mobility	Multiple	Other	Total	Sch Pop	% Sch Pop	
Medicine (SBCLS, SCSCH, SMCM)	63	27	72	9	2	4	1	8	17	203	1,564	13%	3%
Biomedical Sciences	106	31	75	14	1	6	3	21	16	273	2,372	12%	4%
Royal (Dick) School of Veterinary Studies	104	30	100	16	4	8	5	18	17	302	1,940	16%	4%
Clinical Sciences and Community Health	15	13	17	4	3	3	2	4	14	75	1,485	5%	1%
Molecular and Clinical Medicine	28	22	22	4	3	2	1	11	4	97	894	11%	1%
MVM General Degree or Visiting Student	-	-	-	-	-	-	-	-	-	-	1	0%	0%
College Total	316	123	286	47	13	23	12	62	68	950	8,256	12%	13%
College of Science and Engineering	Mental Health	Unseen	SpLD	AS	Visual	Hearing	Mobility	Multiple	Other	Total	Sch Pop	% Sch Pop	
Biological Sciences	87	26	77	10	2	2	4	19	15	242	1,472	16%	3%
Chemistry	56	16	48	7	2	3		5	4	141	918	15%	2%
Engineering	85	20	114	20	2	6	3	13	32	295	2,917	10%	4%
Geosciences	93	19	132	12		6	1	19	10	292	1,775	16%	4%
Informatics	80	21	48	24	2	10	4	20	27	236	2,296	10%	3%
Mathematics	48	15	44	20	2	2	2	11	6	150	1,598	9%	2%
Physics and Astronomy	66	21	61	28	4	1	1	15	6	203	1,175	17%	3%
CSE General Degree or Visiting Student	16	6	15	4	1	2	2	5	5	56	502	11%	1%
College Total	531	144	539	125	15	32	17	107	105	1,615	12,653	13%	22%
Edinburgh Futures Institute	1	2	-	1	-	-	-	-	-	4	12	33%	0%
Total for all Schools	2,718	681	2,242	348	66	161	84	495	450	7,245	48,345	15.0	100%
Percentage students by impairment	37.5%	9.4%	30.9%	4.8%	0.9%	2.2%	1.2%	6.8%	6.2%				