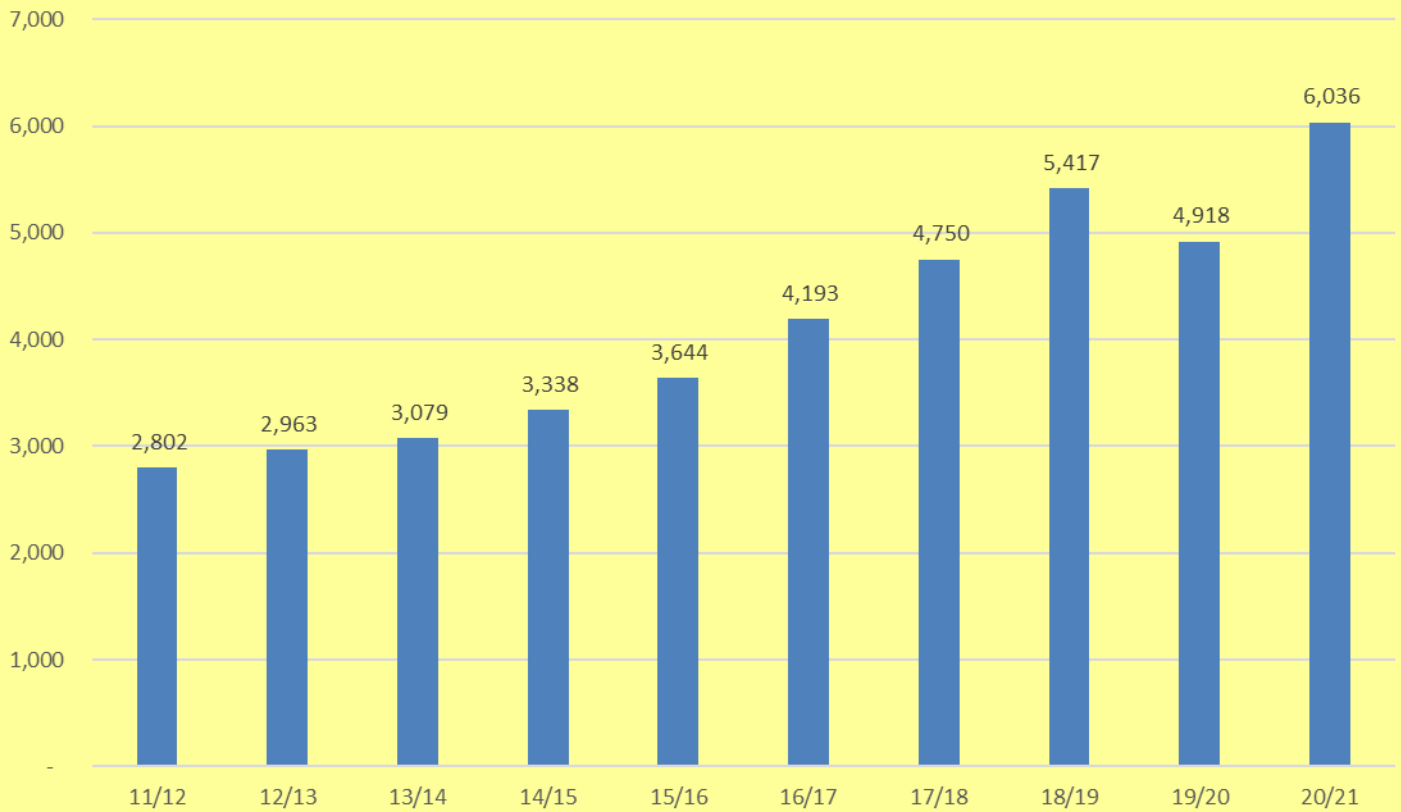
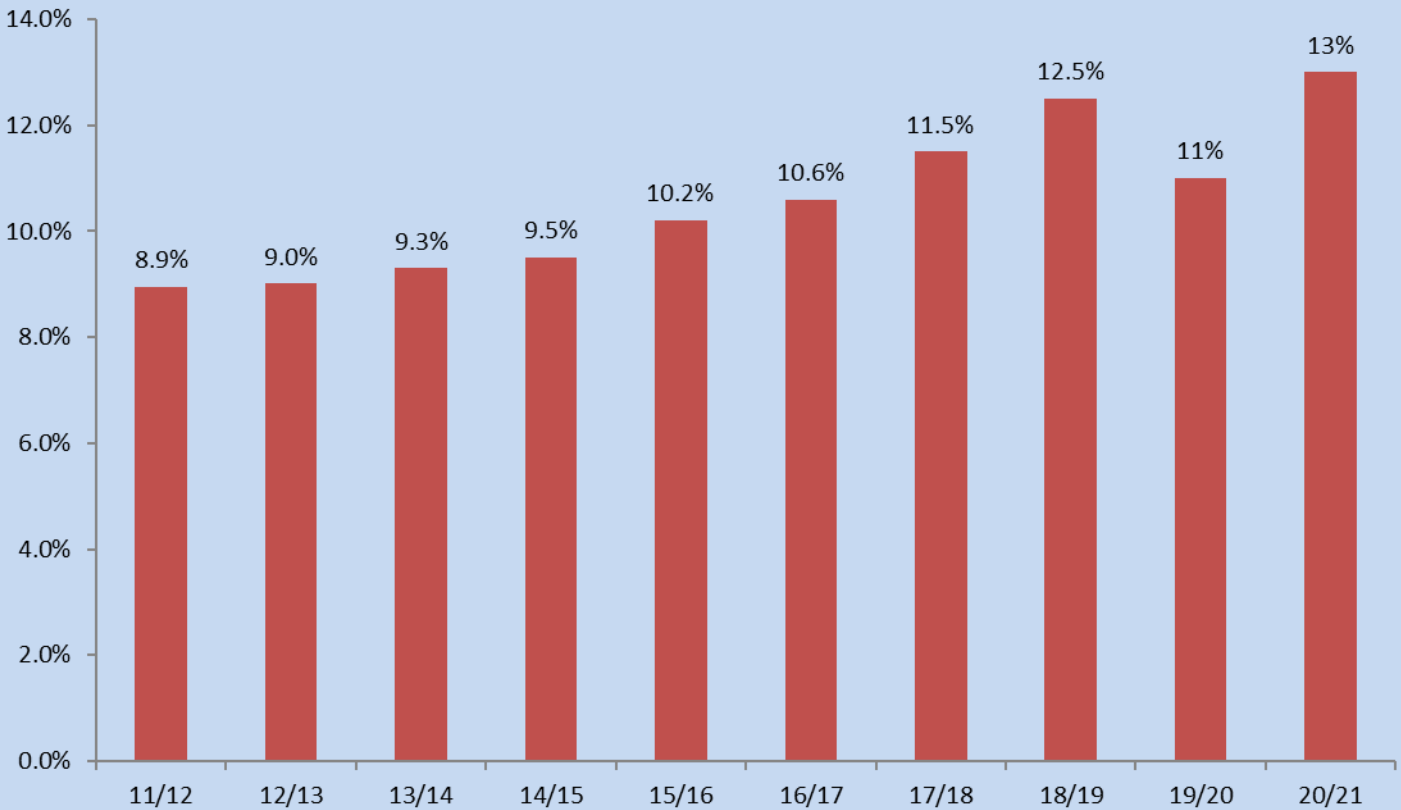




No disabled students attending UoE (last 10 years)

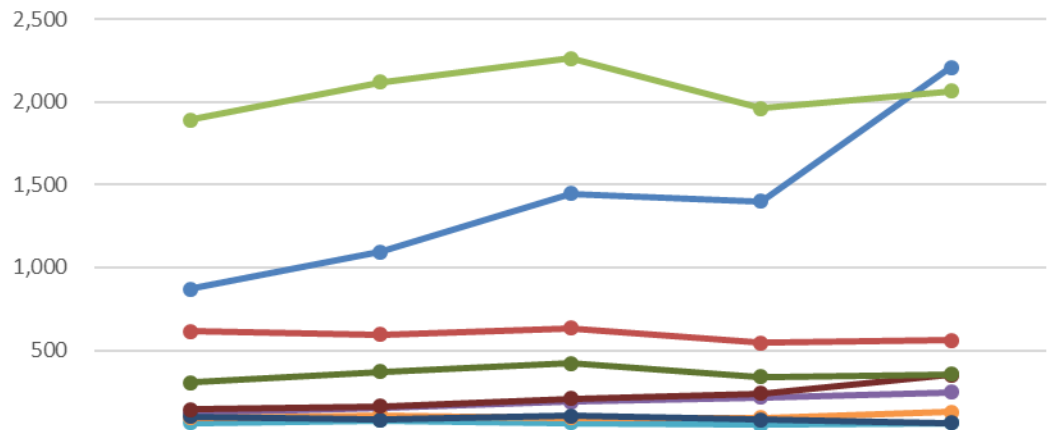


Disabled students as % of full student population (last 10 years)



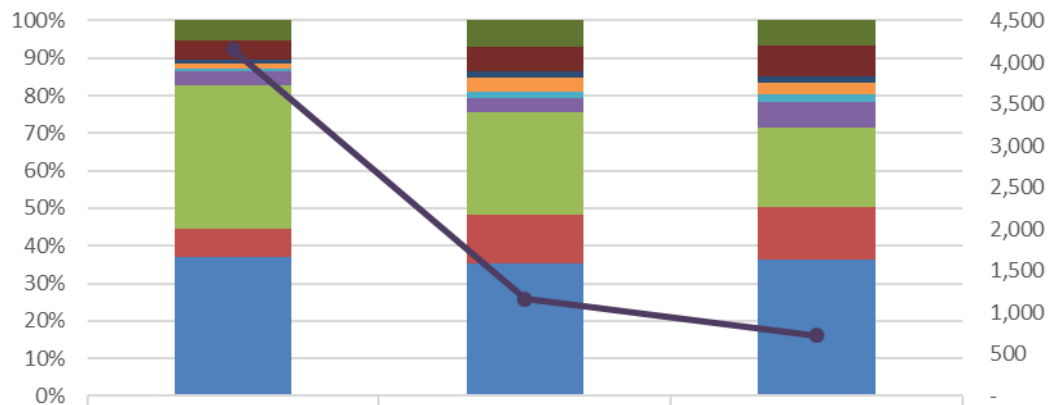


No of students declaring a disability by UCAS Code in last 5 years



	16/17	17/18	18/19	19/20	20/21
Mental Health Issues	870	1,093	1,445	1,400	2,209
Unseen Disability	613	595	632	545	560
Specific Learning Difference (SpLD)	1,893	2,119	2,264	1,960	2,067
Autistic Spectrum Disorder (ASD)	119	151	187	215	245
Visual Impairment	61	75	62	50	61
Hearing Loss/Deaf	91	106	91	90	127
Mobility Impairment	99	81	105	80	61
Multiple Disabilities	143	160	209	240	350
Other Disability	304	370	422	340	356

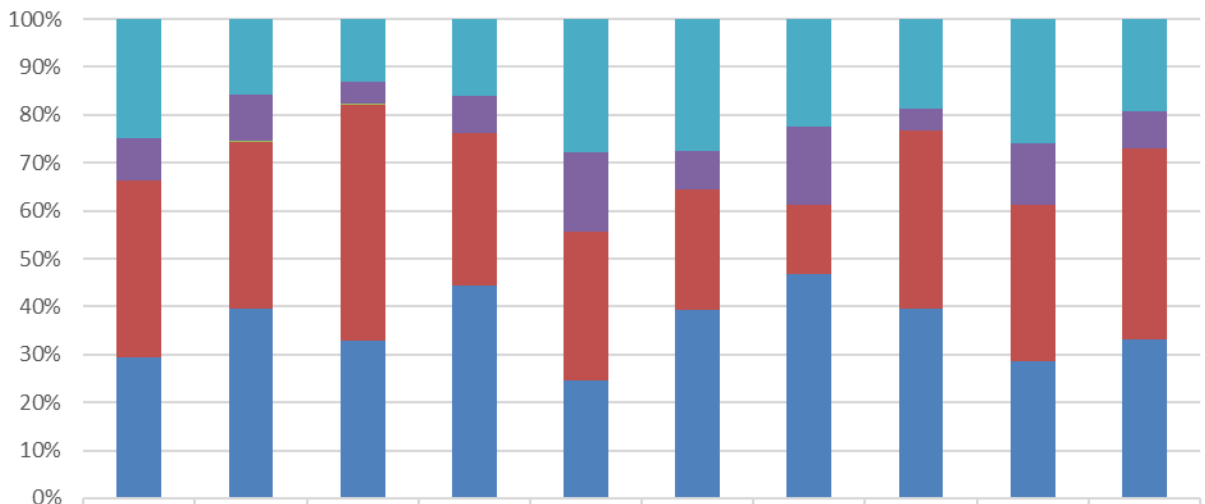
No students by disability and degree level



	UG	PGT	PGR
Other Disability	225	83	48
Multiple Disabilities	215	75	59
Mobility Impairment	31	17	14
Hearing Loss/Deaf	60	45	22
Visual Impairment	25	21	15
Autistic Spectrum Disorder (ASD)	154	42	49
Specific Learning Difference (SpLD)	1,596	318	153
Unseen Disability	309	150	101
Mental Health Issues	1,538	409	262
All Disabilities	4,153	1,160	723

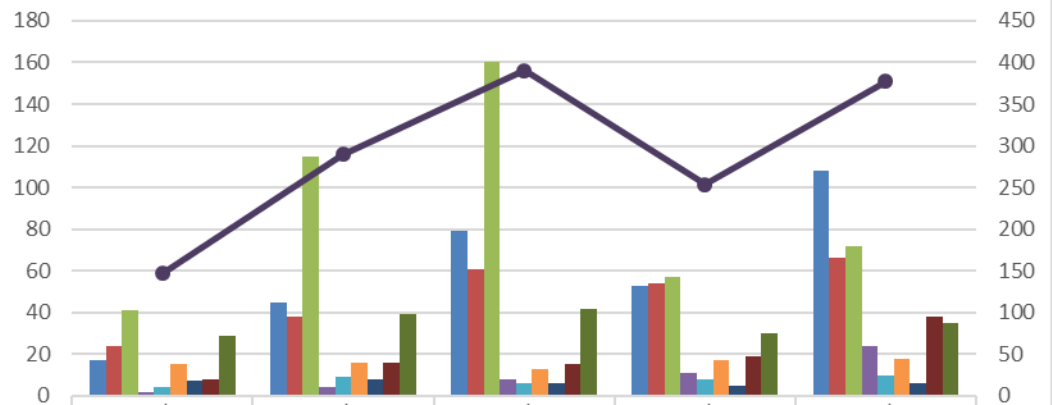


Disabled students by domain



	Mental Health Issues	Unseen Disability	Specific Learning Difference (SpLD)	Autistic Spectrum Disorder (ASD)	Visual Impairment	Hearing Loss/Deaf	Mobility Impairment	Multiple Disabilities	Other Disability	Total
Overseas	548	89	269	39	17	35	14	65	92	1,168
EU	198	53	96	19	10	10	10	16	46	458
Channel Is / Is of Man	1	1	4	-	-	-	-	-	-	6
Other UK	810	195	1,021	78	19	32	9	130	116	2,410
Scotland	652	222	677	109	15	50	29	138	102	1,994

Online Distance Learners (last 5 years)



	16/17	17/18	18/19	19/20	20/21
Mental Health Issues	17	45	79	53	108
Unseen Disability	24	38	61	54	66
Specific Learning Difference (SpLD)	41	115	160	57	72
Autistic Spectrum Disorder (ASD)	2	4	8	11	24
Visual Impairment	4	9	6	8	10
Hearing Loss/Deaf	15	16	13	17	18
Mobility Impairment	7	8	6	5	6
Multiple Disabilities	8	16	15	19	38
Other Disability	29	39	42	30	35
Total	147	290	390	254	377



Student Statistics 2020/21

College of Arts, Humanities and Social Sciences	Mental Health	Unseen	SpLD	ASD	Visual	Hearing	Mobility	Multiple	Other	Total	Sch Pop	% Sch Pop	% Dis Students
Business	34	14	96	1	2	2	3	7	10	169	2,260	7%	3%
Edinburgh College of Art	227	44	260	22	3	8	5	33	35	637	3,365	19%	11%
Divinity	42	10	51	2	-	-	1	7	4	117	510	23%	2%
Economics	25	5	53	3	1	1	-	7	13	108	1,170	9%	2%
Health in Social Science	69	30	74	3	2	9	6	15	15	223	1,275	17%	4%
History and Classics and Archaeology	175	36	157	26	7	14	5	35	16	471	2,110	22%	8%
Law	101	24	59	6	5	10	5	15	15	240	1,860	13%	4%
Literature, Languages and Cultures	269	41	102	22	4	7	4	30	31	510	2,780	18%	8%
Philosophy, Psychology and Language Sciences	199	33	127	18	2	7	4	21	26	437	2,330	19%	7%
Moray House School of Education	83	50	155	8	2	17	2	18	14	349	3,270	11%	6%
Social and Political Sciences	252	42	189	12	5	5	3	31	31	570	3,090	18%	9%
Centre for Open Learning	32	10	23	-	-	3	4	9	12	93	1,635	6%	2%
AHSS General Degree or Visiting Student	9	2	1	-	-	1	1	1	4	19	475	4%	0%
College Total	1,517	341	1,347	123	33	84	43	229	226	3,943	26,130	15%	65%
College of Medicine and Veterinary Medicine	Mental Health	Unseen	SpLD	ASD	Visual	Hearing	Mobility	Multiple	Other	Total	Sch Pop	% Sch Pop	
Medicine (SBCLS, SCSCHE, SMCM)	55	17	56	5	1	4	3	11	11	163	1,475	11%	3%
Biomedical Sciences	89	33	53	11	3	4	1	13	21	228	2,145	11%	4%
Royal (Dick) School of Veterinary Studies	93	26	88	10	3	5	4	17	16	262	1,885	14%	4%
Clinical Sciences and Community Health	20	19	22	3	1	5	-	4	5	79	1,460	5%	1%
Molecular and Clinical Medicine	22	16	18	4	4	3	-	3	4	74	770	10%	1%
MVM General Degree or Visiting Student	-	-	-	-	-	-	-	-	-	-	5	0%	0%
College Total	279	111	237	33	12	21	8	48	57	806	7,740	10%	13%
College of Science and Engineering	Mental Health	Unseen	SpLD	ASD	Visual	Hearing	Mobility	Multiple	Other	Total	Sch Pop	% Sch Pop	
Biological Sciences	67	11	52	10	4	6	2	10	6	168	1,310	13%	3%
Chemistry	50	10	35	8	3	3	-	7	7	123	960	13%	2%
Engineering	61	14	96	14	2	3	3	10	13	216	2,715	8%	4%
Geosciences	69	26	143	11	2	1	-	7	13	272	1,820	15%	5%
Informatics	60	18	45	14	1	8	3	16	14	179	2,175	8%	3%
Mathematics	39	7	47	9	-	-	1	8	8	119	1,330	9%	2%
Physics and Astronomy	57	16	56	19	2	1	1	10	9	171	1,065	16%	3%
CSE General Degree or Visiting Student	10	6	9	4	2	-	-	4	4	39	370	11%	1%
College Total	413	108	483	89	16	22	10	72	74	1,287	11,745	11%	21%
Total for all Schools	2,209	560	2,067	245	61	127	61	349	357	6,036	45,615	13.2	100%
Percentage students by impairment	36.6%	9.3%	34.2%	4.1%	1.0%	2.1%	1.0%	5.8%	5.9%				